



# Beilagepläne zum Gestaltungsplan Bahnhof Nord



31. Okt. 2003

---

Situation  
Grundriss Erdgeschoss  
Grundriss Zwischengeschoss  
Grundriss 1.OG  
Grundriss 2.OG  
Grundriss 3.OG  
Grundriss 4.OG  
Grundriss 5.OG  
Grundriss 6./7. – 17./18.OG  
Grundriss 1.UG  
Grundriss 2.UG  
Grundriss 3.UG  
Grundriss 4.UG  
Längsschnitt  
Querschnitt  
Ostfassade  
Südfassade

---

Architektur Giuliani Hönger, Dipl. Architekten ETH/ BSA/ SIA, Hardstr. 219, 8005 Zürich  
Planung ERR Raumplaner FSU SIA, Kirchgasse 16, 9004 St. Gallen

+41 43 243 41 00  
+41 71 227 62 62

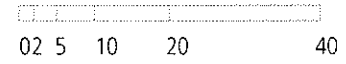


Stadtplanungsamt  
31. Oktober 2005

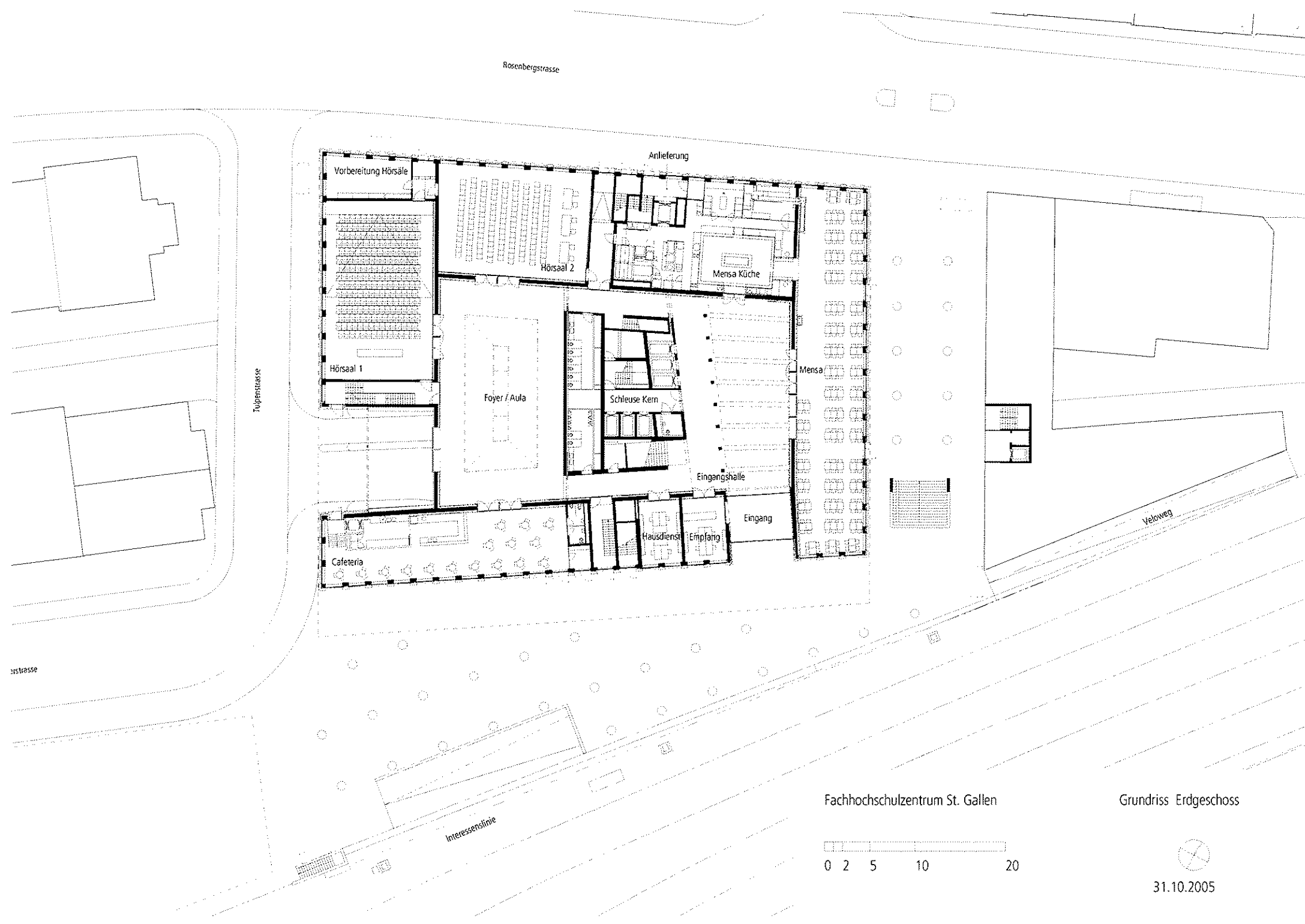


Fachhochschulzentrum St. Gallen

Situation



31.10.2005



Rosenbergrasse

Anlieferung

Vorbereitung Hörsäle

Hörsaal 2

Mensa Küche

Hörsaal 1

Foyer / Aula

Schleuse Kern

Mensa

Eingangshalle

Cafeteria

Hausdienst

Empfang

Eingang

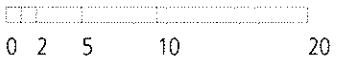
Veloweg

Strasse

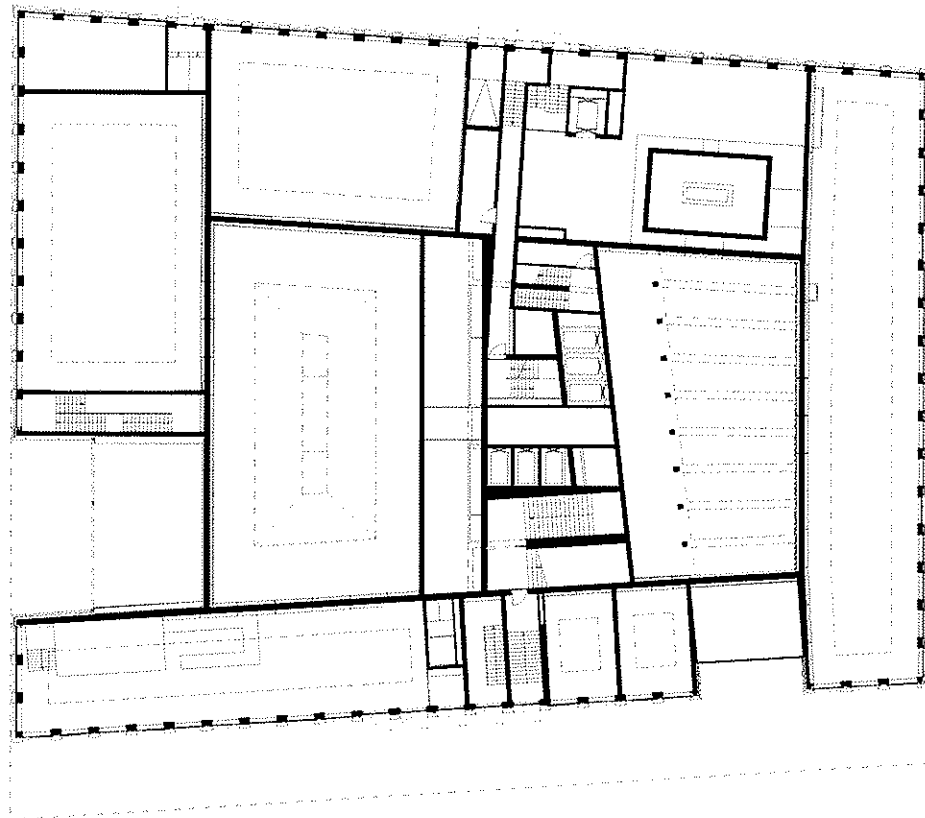
Interessenslinie

Fachhochschulzentrum St. Gallen

Grundriss Erdgeschoss

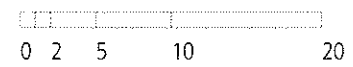


31.10.2005

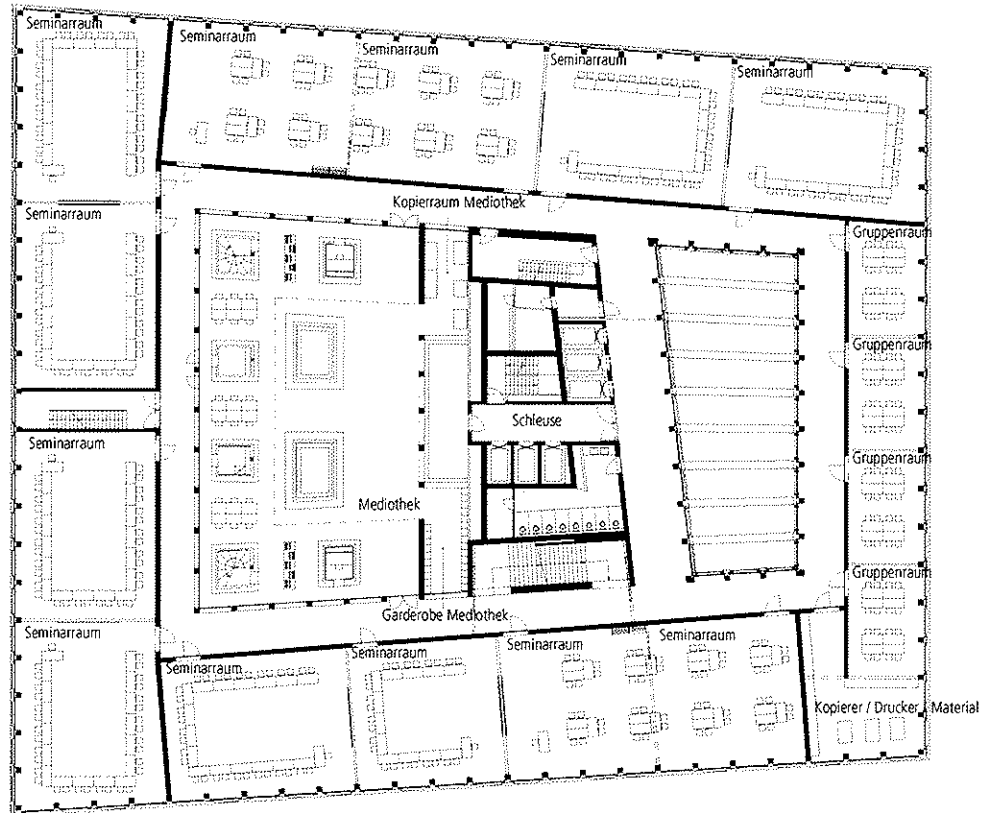


Fachhochschulzentrum St. Gallen

Grundriss Zwischengeschoss

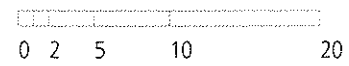


31.10.2005

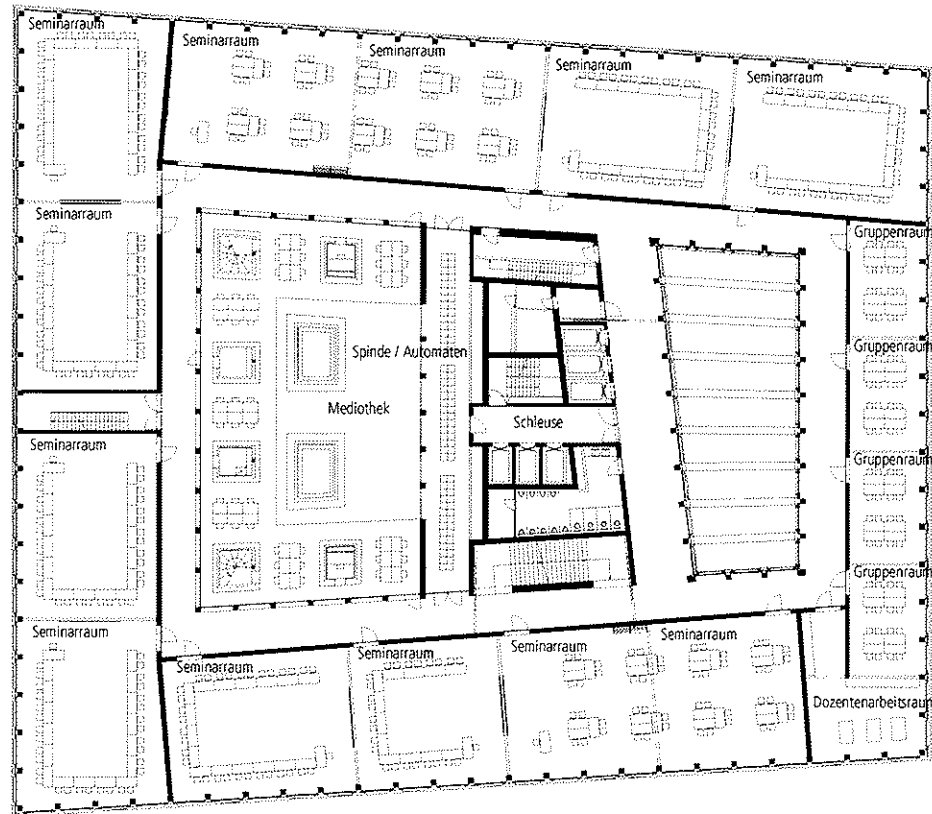


Fachhochschulzentrum St. Gallen

Grundriss 1. OG

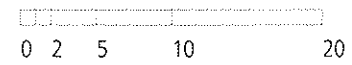


31.10.2005

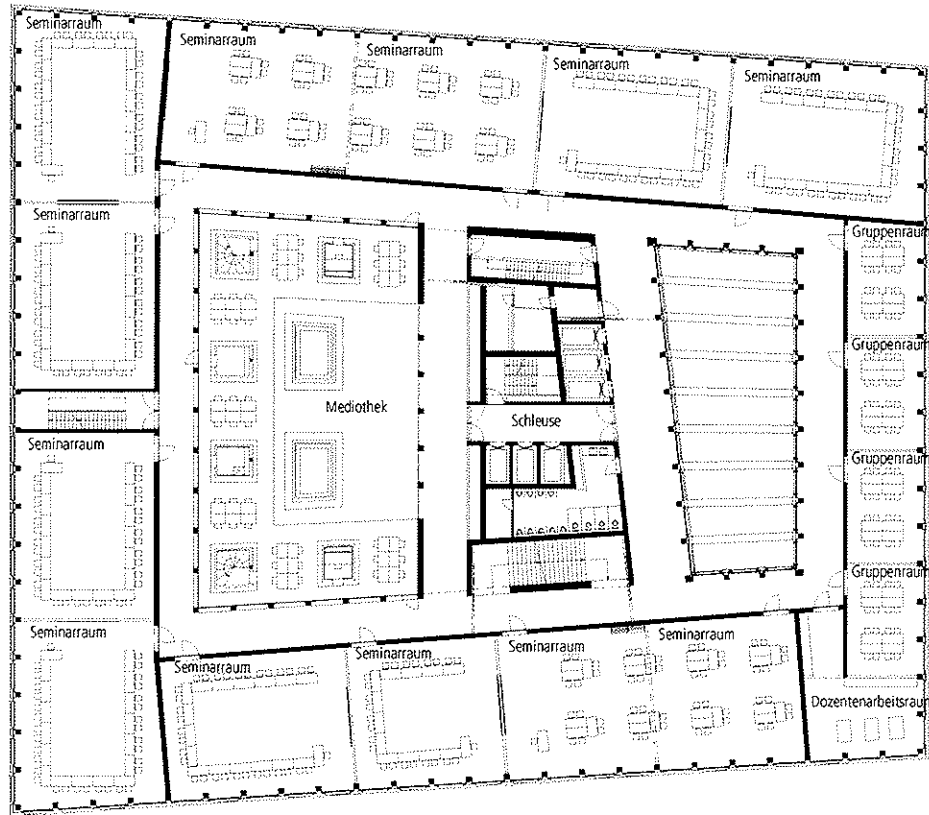


Fachhochschulzentrum St. Gallen

Grundriss 2. OG

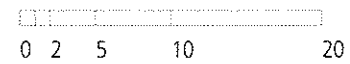


31.10.2005

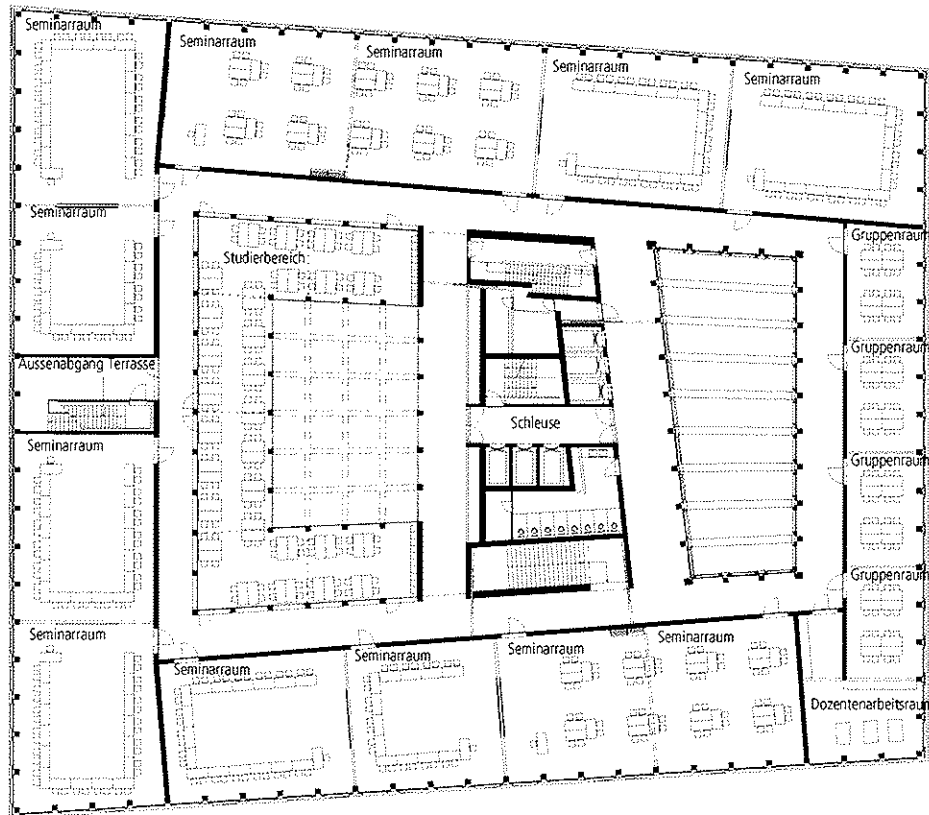


Fachhochschulzentrum St. Gallen

Grundriss 3. OG

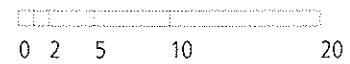


31.10.2005



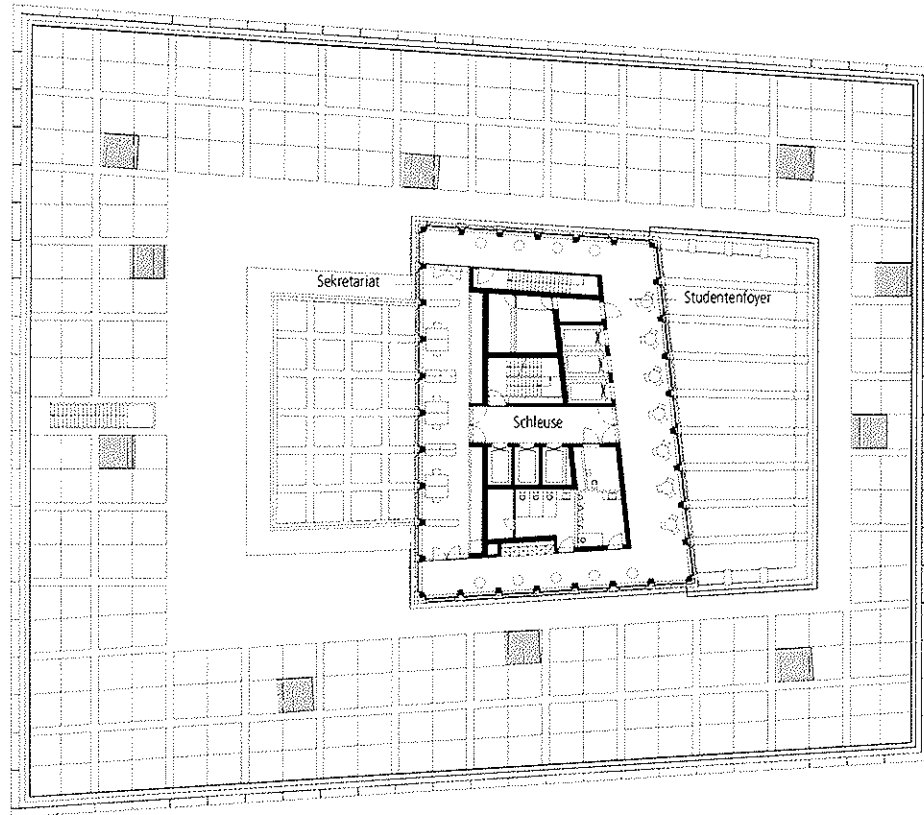
Fachhochschulzentrum St. Gallen

Grundriss 4. OG



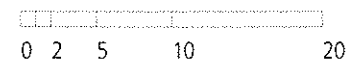
31.10.2005



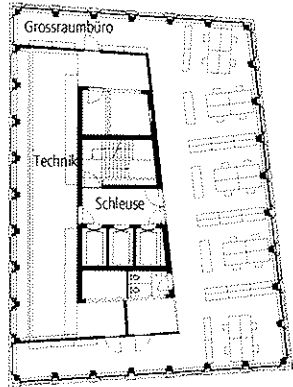


Fachhochschulzentrum St. Gallen

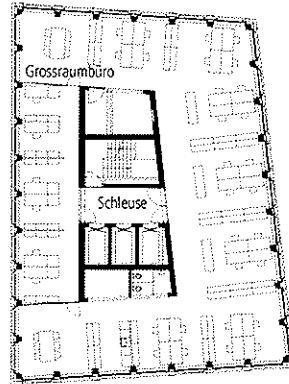
Grundriss 5. OG



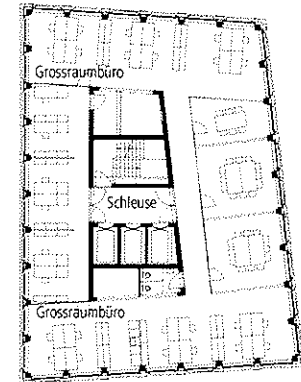
31.10.2005



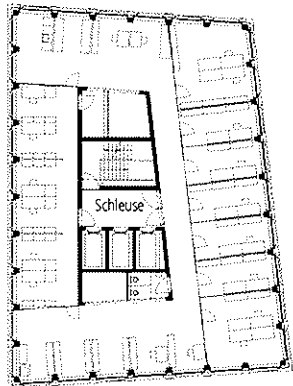
6. OG



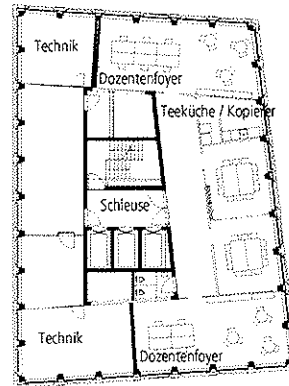
Grundrissvariante 7. - 17.  
OG



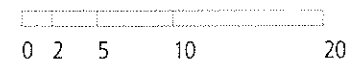
Grundrissvariante 7. - 17.  
OG

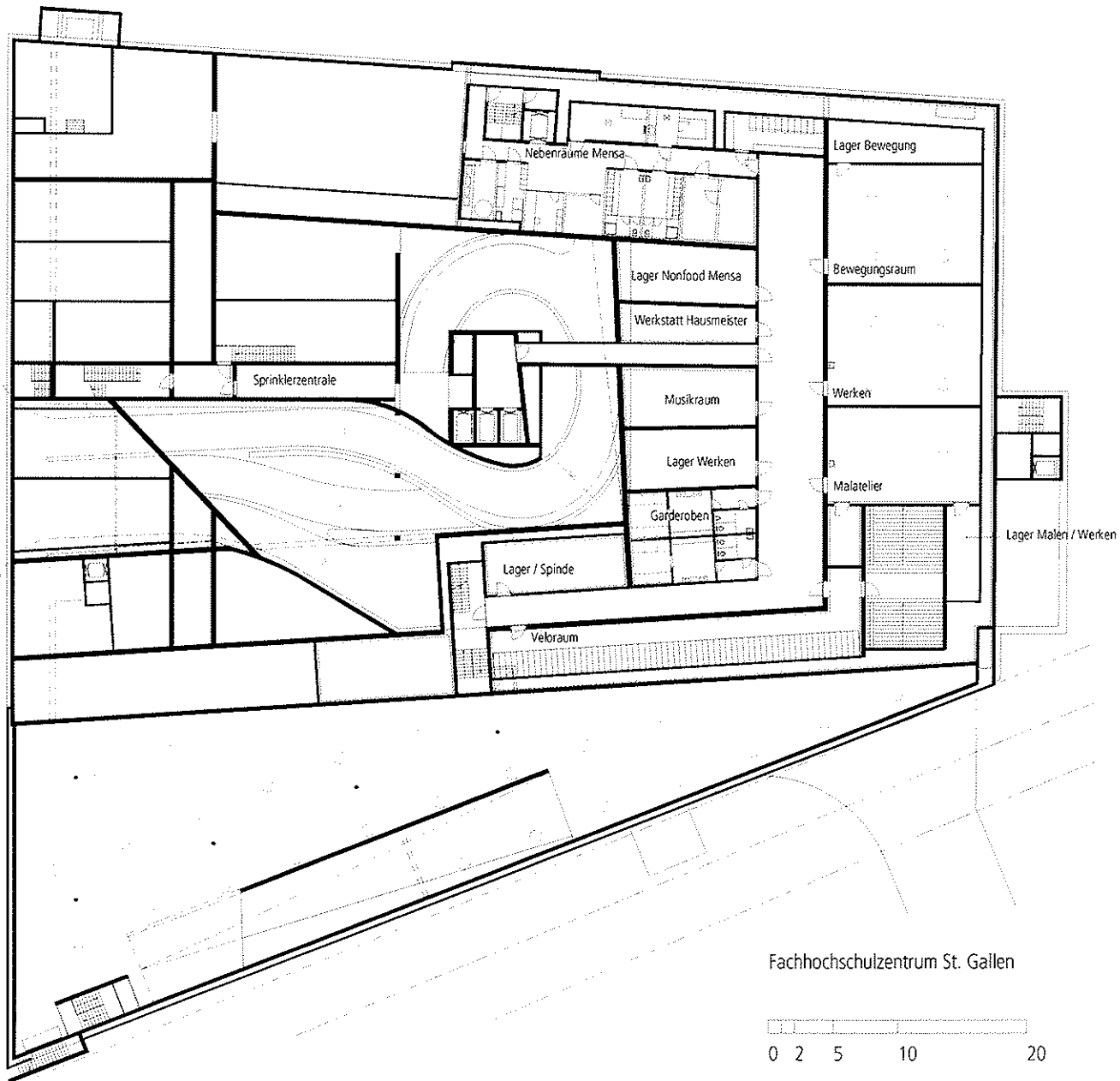


Grundrissvariante 7. - 17.  
OG



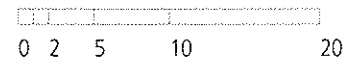
18. OG



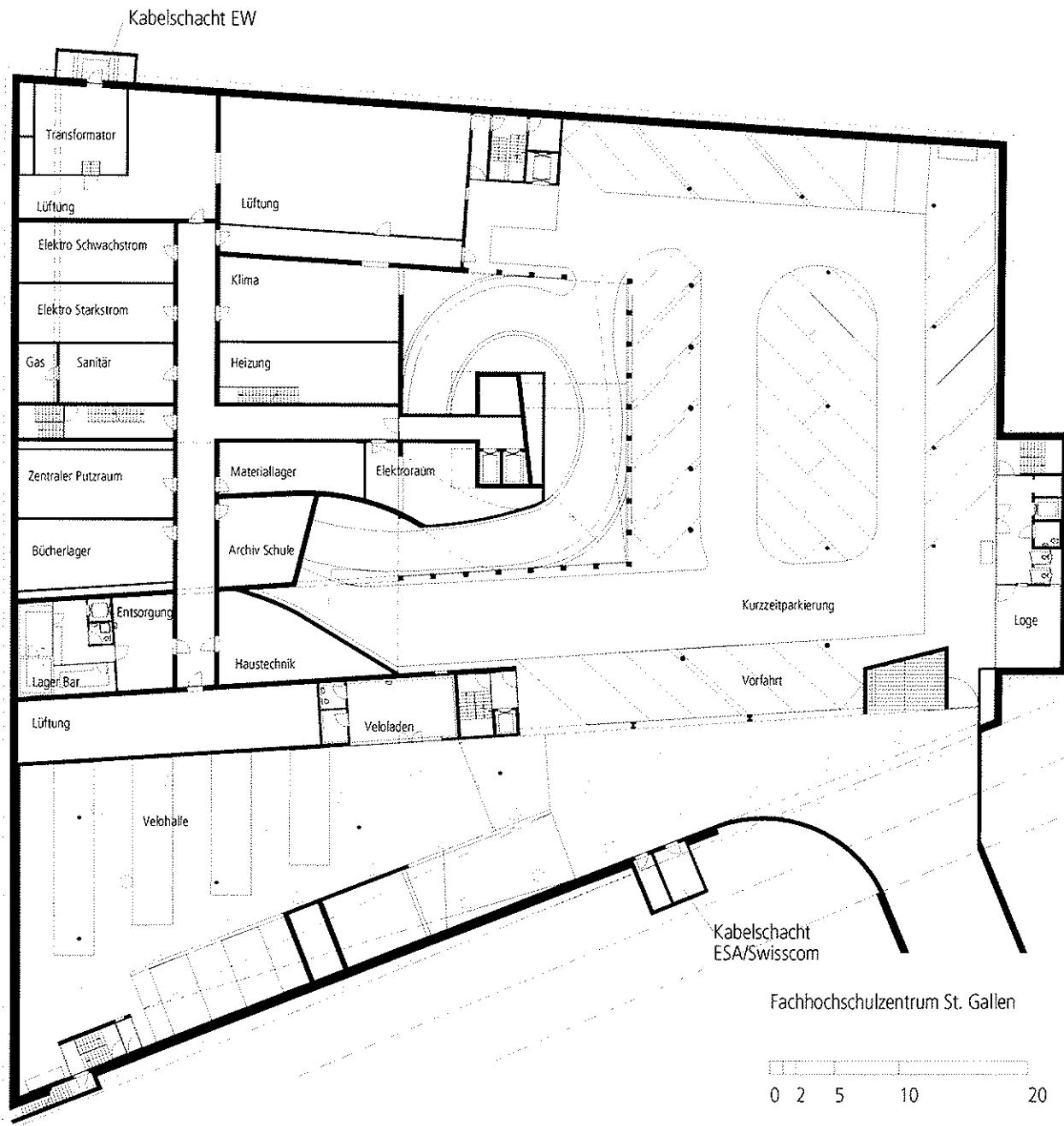


Fachhochschulzentrum St. Gallen

Grundriss 1. UG

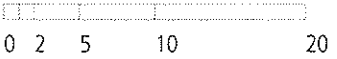


31.10.2005

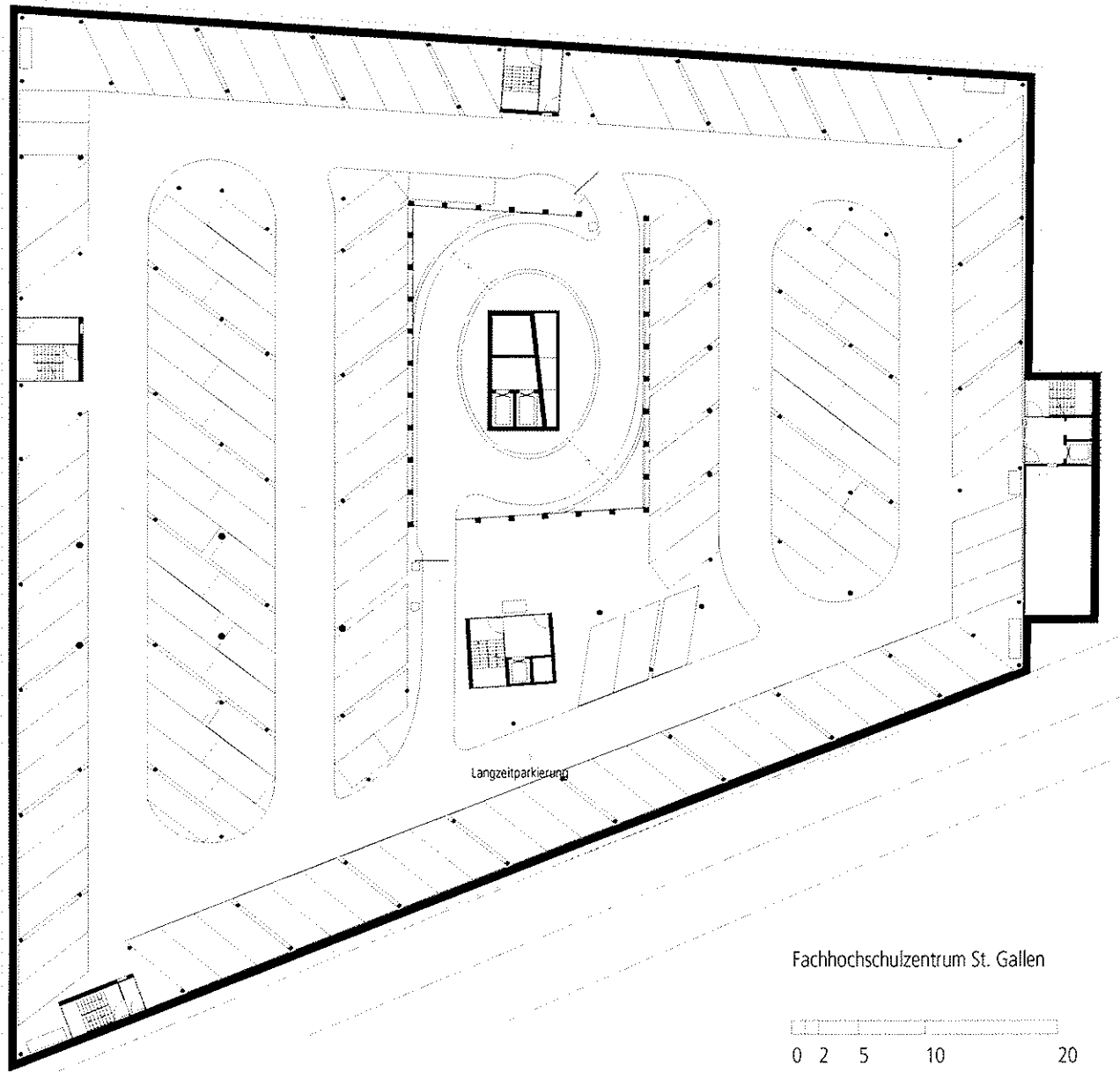


Fachhochschulzentrum St. Gallen

Grundriss 2. UG



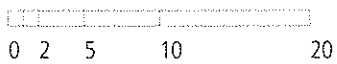
31.10.2005



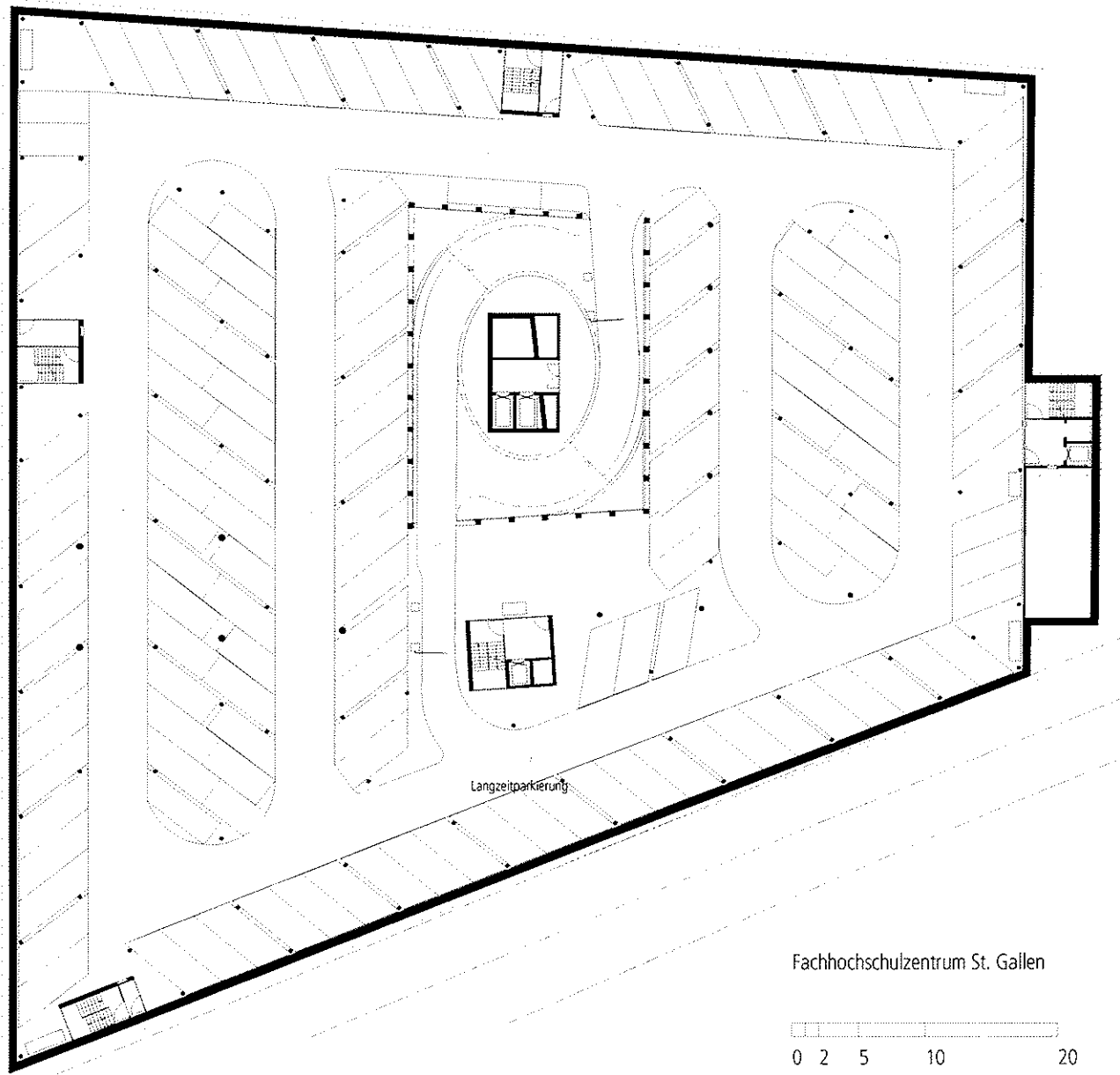
Langzeitparkierung

Fachhochschulzentrum St. Gallen

Grundriss 3. UG



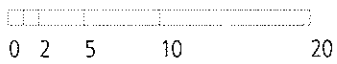
31.10.2005



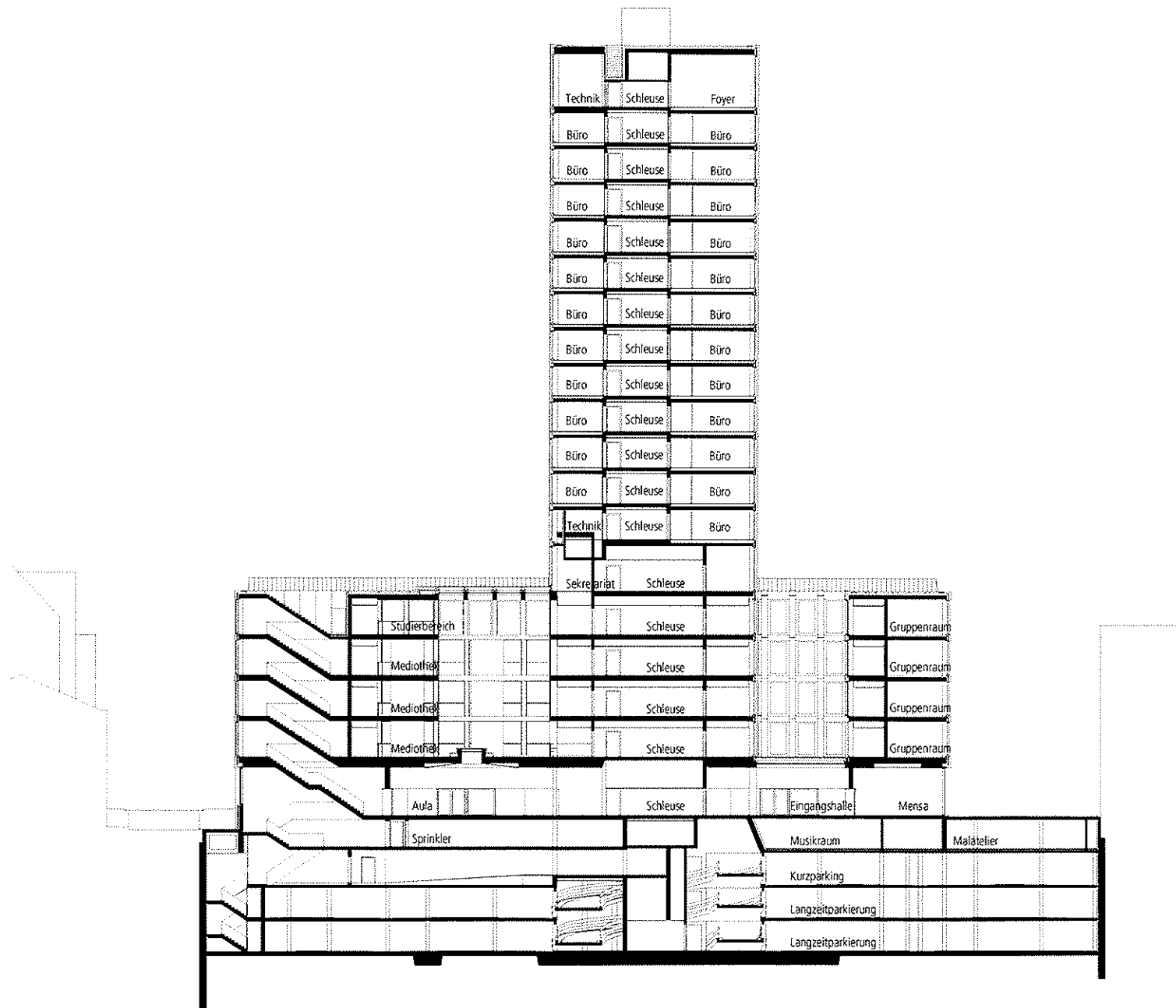
Langzeitparkierung

Fachhochschulzentrum St. Gallen

Grundriss 4. UG

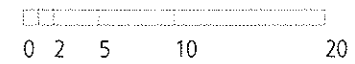


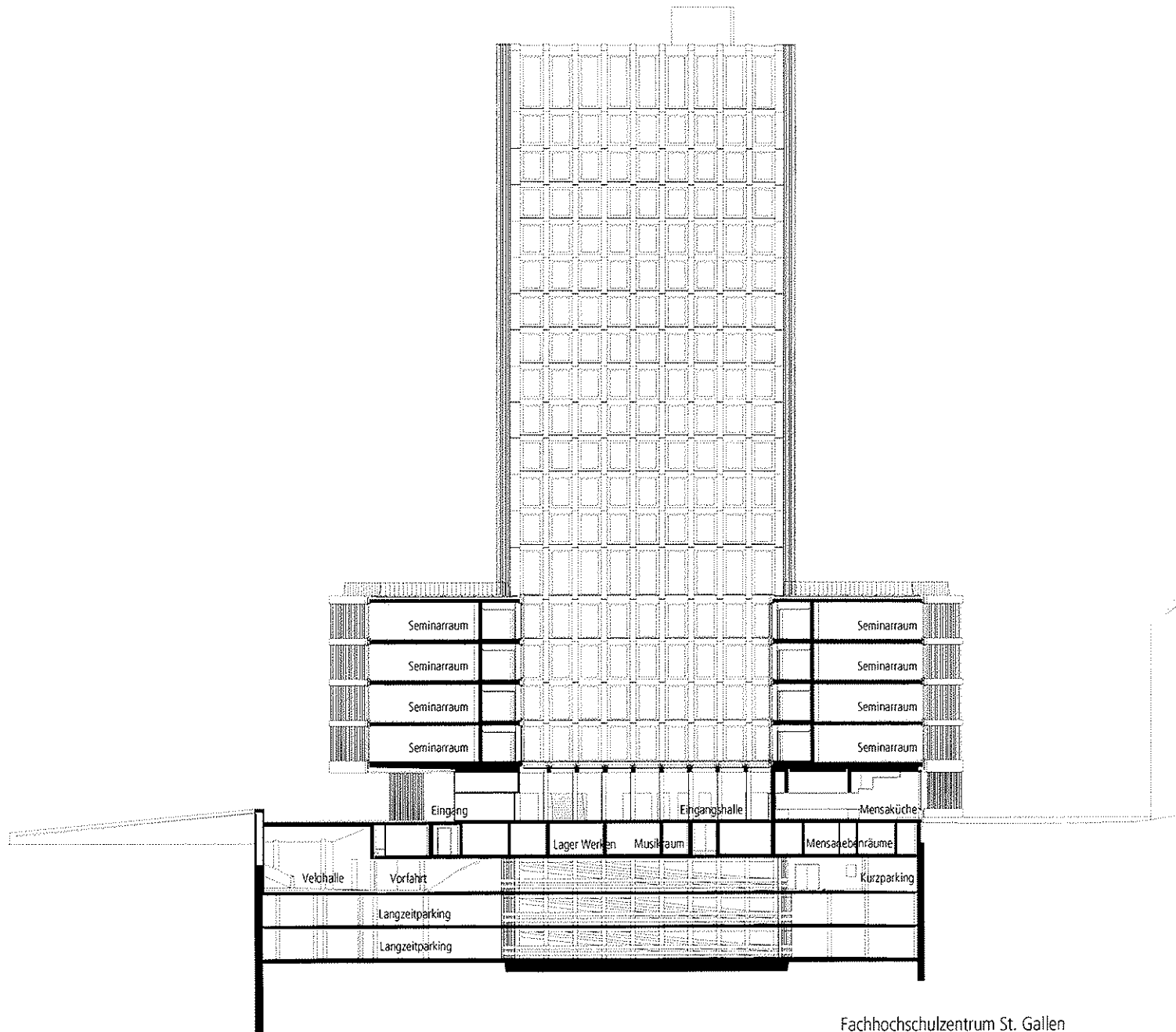
31.10.2005



Fachhochschulzentrum St. Gallen

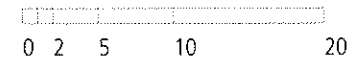
Längsschnitt



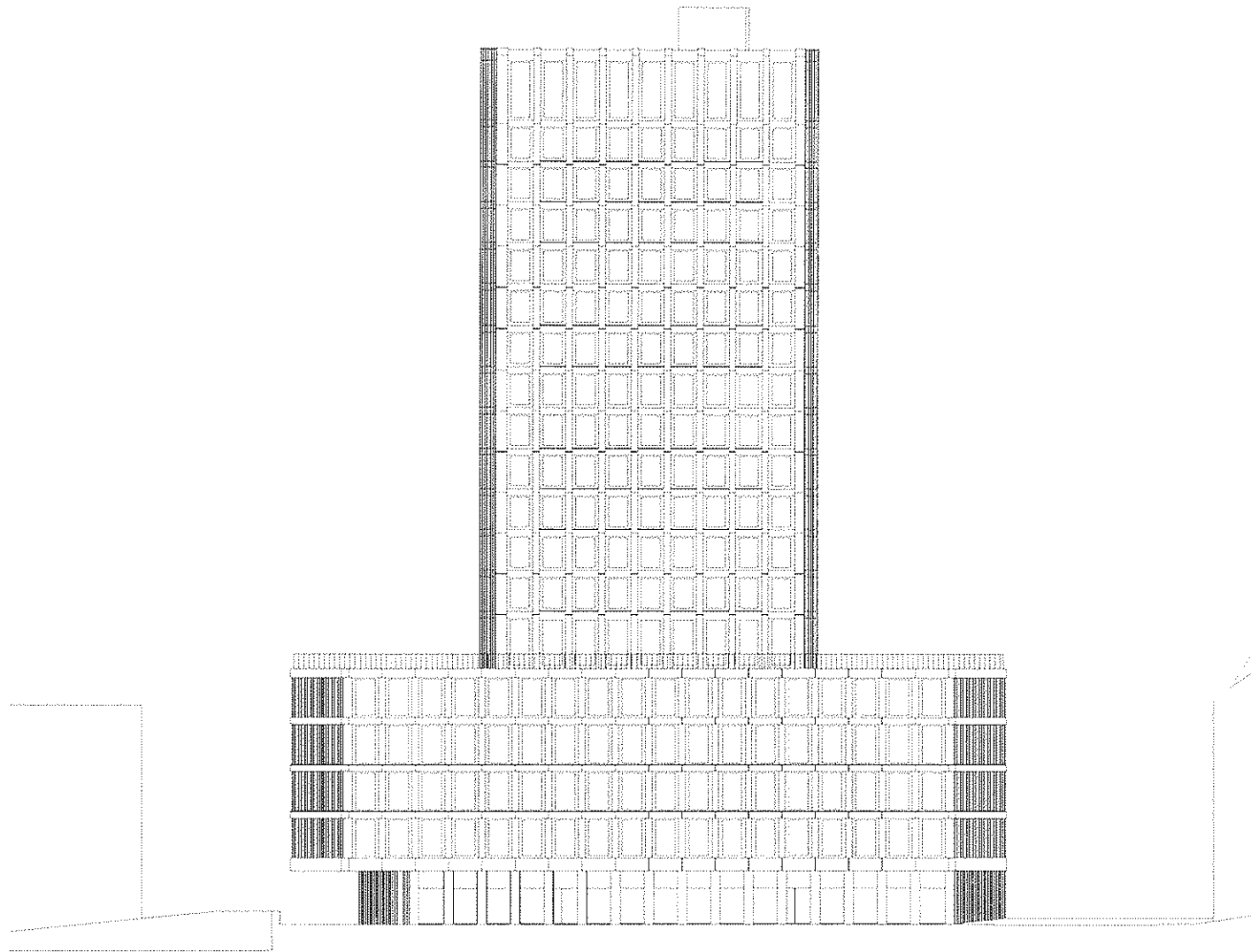


Fachhochschulzentrum St. Gallen

Querschnitt

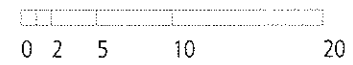




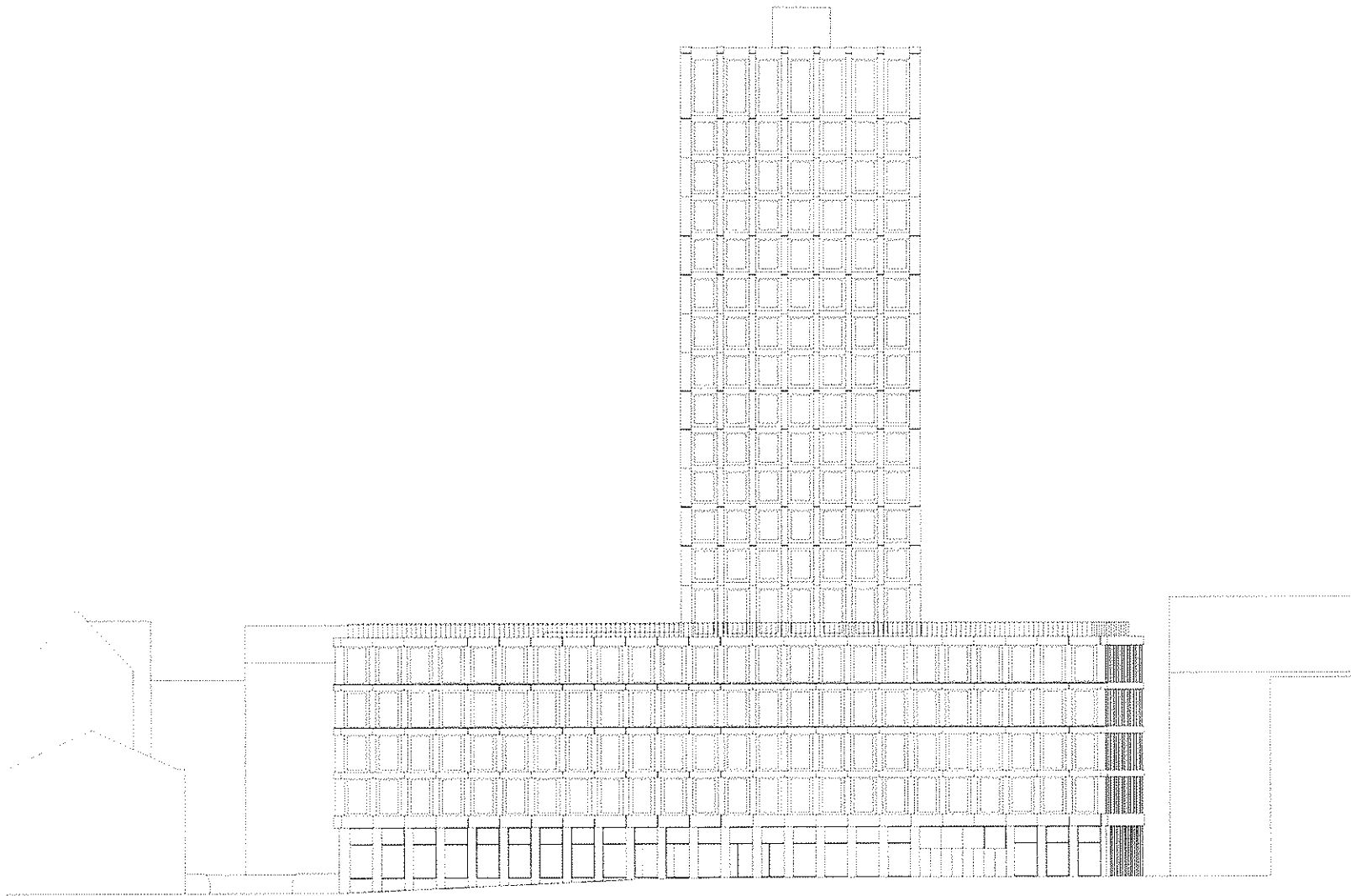


Fachhochschulzentrum St. Gallen

Ostfassade

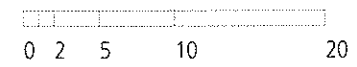


31.10.2005



Fachhochschulzentrum St. Gallen

Süfassad



31.10.2005